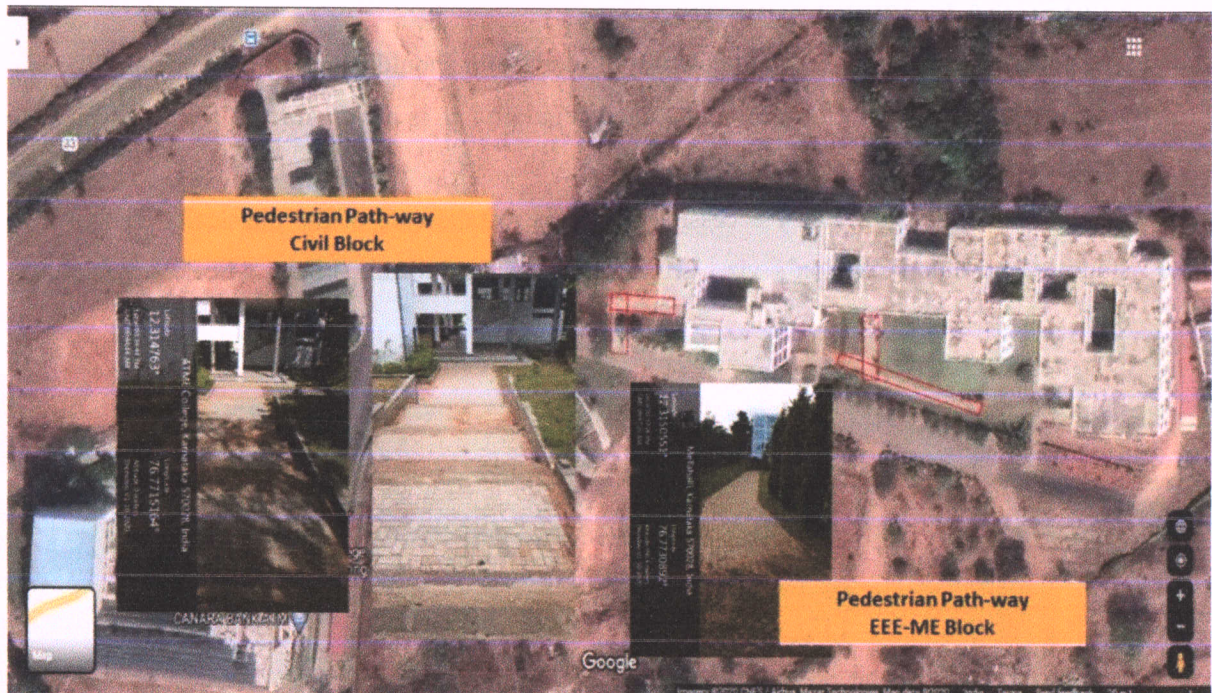


Affiliated to VTU, Belagavi; Approved by AICTE, New Delhi and Recognised by Government of Karnataka
Programs accredited by NBA, New Delhi - CV, EC, EE & ME (Validity: 2019-20 to 2021-22)



The infrastructures provided for
unobstructed movement of disabled student
in ATMECE campus.



ATME COLLEGE OF ENGINEERING

13th Kilometer, Mysore-Kanakapura-Bangalore Road, Mysore - 570 028 P: 0821-2593335 F: 0821-2593328

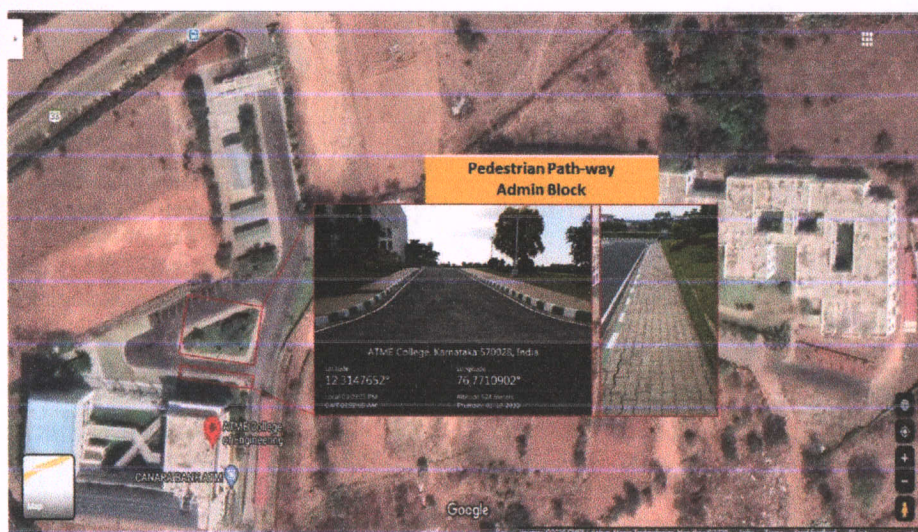
Email : info@atme.in Web : www.atme.in

Principal
PRINCIPAL
ATME College of Engineering
13th KM Mysuru-Kanakapura-Bangalore Road
Mellahalli, Mysuru-570 028

Pedestrian friendly pathways:

The campus comprises of a good network of roads with shoulders paved using paver blocks. As the shoulders are wide and maintained regularly, it is very safe for the users in the campus.

Institution is providing many accessible facilities to take care of the physically challenged students and elderly person's viz., Lifts, Ramps/Rails, Special Toilets, wheelchair Facility etc.




PRINCIPAL

ATME College of Engineering
13th KM Mysuru-Kanakapura-Bangalore Road
Mellahalli Mysuru-570 028

ATME COLLEGE OF ENGINEERING

13th Kilometer, Mysore-Kanakapura-Bangalore Road, Mysore - 570 028 P: 0821-2593335 F: 0821-2593328
Email : info@atme.in Web : www.atme.in

Affiliated to VTU, Belagavi; Approved by AICTE, New Delhi and Recognised by Government of Karnataka
Programs accredited by NBA, New Delhi - CV, EC, EE & ME (Validity: 2019-20 to 2021-22)

Plastic free campus:

- ATME College of Engineering has belief in Sustainable development & Growth. Since from the inception the college campus is made Plastic free and sufficient care has to be taken in this direction.
- Signage boards saying “Plastic Free Zone” is placed in each block at key positions along with the dustbins.
- Two dustbins are placed under each sign board for the easy segregation of waste as biodegradable and non-degradable waste.
- Also, Students are advised and trained in the direction of minimalistic use of plastics and reduction in the use of Plastics.
- Every year, College will celebrate to mark the World Environment Day. Students and staffs are actively participating in these occasions and awareness program is organized for students on the use of plastics, side effects of plastics and safe disposal of plastics.



ATME COLLEGE OF ENGINEERING

13th Kilometer, Mysore-Kanakapura-Bangalore Road, Mysore - 570 028 P: 0821-2593335 F: 0821-2593328
Email : info@atme.in Web : www.atme.in

[Signature]

PRINCIPAL

ATME College of Engineering
13th KM Mysore-Kanakapura-Bangalore Road
Malahalli Mysore-570 028