



ATME

College of Engineering



NBA

ACCREDITED

Affiliated to VTU, Belagavi; Approved by AICTE, New Delhi and Recognised by Government of Karnataka
Programs accredited by NBA, New Delhi - CV, EC, EE & ME (Validity: 2019-20 to 2021-22)

7.1.5 Green campus initiatives

1. GREEN PRACTICES:

- The ATME College of Engineering has aesthetically designed green buildings, surrounded by greenery creating good ambience for Teaching & learning.
- The classrooms are well ventilated for fresh air and lighting is adequate for the learning.
- Dustbins have been provided along all major corridors & Every block for collection and waste.
- Drinking water facility (RO-Water) is provided for students and staffs for each block.
- Water treated from Sewage Treatment plant are used for flushing and for gardening, ensuring no water is wasted in the campus.
- Also, rainwater harvesting facility is also provided ensuring the refilling of underground wells during the rainy season.
- Firefighting services have been installed all around the campus as per the regulatory norms suggested during the approval for the building plans.
- A Maintenance Section constituted in the college will take care of the maintenance of the campus with sufficient human resources.
- The campus has lush green lawns and well grown trees, thus making the institute, eco-friendly.
- The campus also houses its own roof top power generation Plant of 95KWP capacity, ensuring green power source and its commitment to Green Energy initiative.

7.1.5.1 Restricted Entry of automobiles

With the intention of keeping the noise pollution and air-pollution at lower levels, ATMECE has restricted the entry and movement of automobiles in the campus. Most of the vehicles are of students'; they have been given the parking lot near the entrance so that most of the vehicular movement is avoided inside the campus. Faculty and visitor's parking areas are also designated to minimise the unnecessary movement of the vehicle in the campus. The geotagged photographs are provided for better clarity.

PRINCIPAL

ATME College of Engineering
13th KM Mysuru-Kanakapura-Bangalore Road
Mettahalli Mysuru-570 028

ATME COLLEGE OF ENGINEERING

13th Kilometer, Mysore-Kanakapura-Bangalore Road, Mysore - 570 028 P: 0821-2593335 F: 0821-2593328

Email : info@atme.in Web : www.atme.in



ATME

College of Engineering



NBA

ACCREDITED

Affiliated to VTU, Belagavi; Approved by AICTE, New Delhi and Recognised by Government of Karnataka
Programs accredited by NBA, New Delhi - CV, EC, EE & ME (Validity: 2019-20 to 2021-22)



[Signature]
PRINCIPAL

ATME College of Engineering
13th KM Mysuru-Kanakapura-Bangalore Road
Mellahalli, Mysuru-570 028

ATME COLLEGE OF ENGINEERING

13th Kilometer, Mysore-Kanakapura-Bangalore Road, Mysore - 570 028 P: 0821-2593335 F: 0821-2593328

Email : info@atme.in Web : www.atme.in



ATME

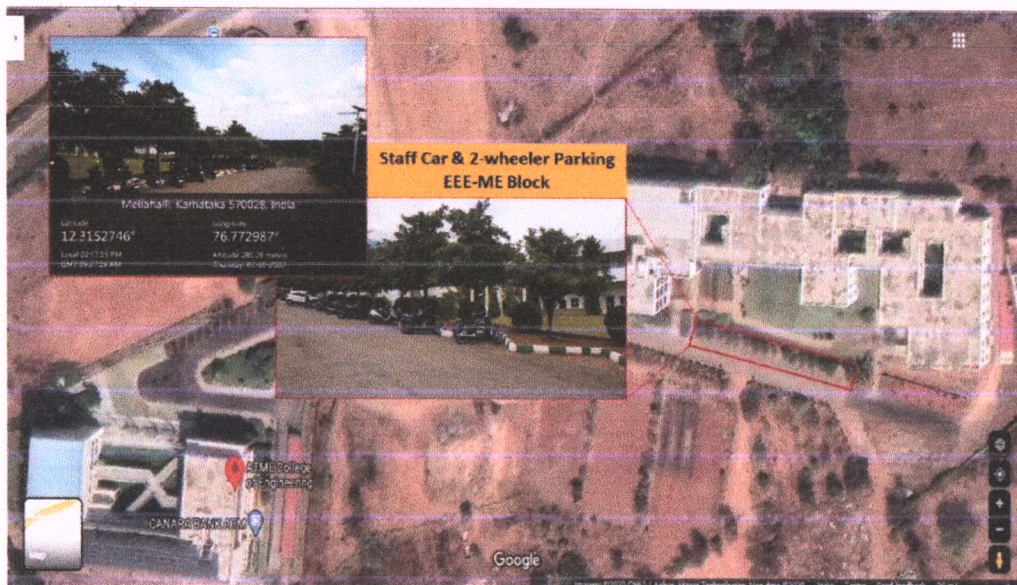
College of Engineering



NBA

ACCREDITED

Affiliated to VTU, Belagavi; Approved by AICTE, New Delhi and Recognised by Government of Karnataka
Programs accredited by NBA, New Delhi - CV, EC, EE & ME (Validity: 2019-20 to 2021-22)



PRINCIPAL

ATME College of Engineering
13th KM Mysuru-Kanakapura-Bangalore Road
Melahalli, Mysuru-570 028

ATME COLLEGE OF ENGINEERING

13th Kilometer, Mysore-Kanakapura-Bangalore Road, Mysore - 570 028 P: 0821-2593335 F: 0821-2593328

Email : info@atme.in Web : www.atme.in



ATME

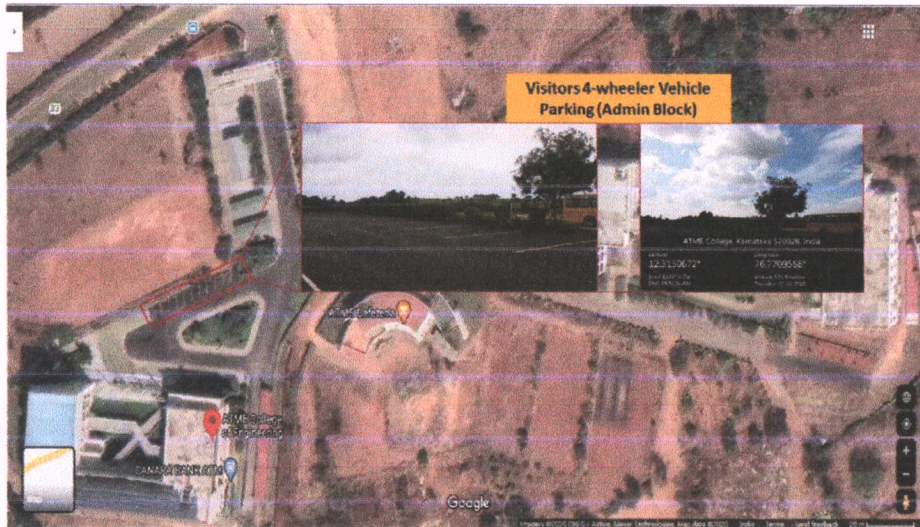
College of Engineering



NBA

ACCREDITED

Affiliated to VTU, Belagavi; Approved by AICTE, New Delhi and Recognised by Government of Karnataka
Programs accredited by NBA, New Delhi - CV, EC, EE & ME (Validity: 2019-20 to 2021-22)



PRINCIPAL

ATME College of Engineering
13th KM Mysuru-Kanakapura-Bangalore Road
Mellahalli Mysuru-570 028

ATME COLLEGE OF ENGINEERING

13th Kilometer, Mysore-Kanakapura-Bangalore Road, Mysore - 570 028 P: 0821-2593335 F: 0821-2593328

Email : info@atme.in Web : www.atme.in

Affiliated to VTU, Belagavi; Approved by AICTE, New Delhi and Recognised by Government of Karnataka
Programs accredited by NBA, New Delhi - CV, EC, EE & ME (Validity: 2019-20 to 2021-22)

7.1.5.2 Plastic free campus:

- ATME College of Engineering has belief in Sustainable development & Growth. Since from the inception the college campus is made Plastic free and sufficient care has to be taken in this direction.
- Signage boards saying “Plastic Free Zone” is placed in each block at key positions along with the dustbins.
- Two dustbins are placed under each sign board for the easy segregation of waste as biodegradable and non-degradable waste.
- Also, Students are advised and trained in the direction of minimalistic use of plastics and reduction in the use of Plastics.
- Every year, College will celebrate to mark the World Environment Day. Students and staffs are actively participating in these occasions and awareness program is organized for students on the use of plastics, side effects of plastics and safe disposal of plastics.



ATME COLLEGE OF ENGINEERING

13th Kilometer, Mysore-Kanakapura-Bangalore Road, Mysore - 570 028 P: 0821-2593335 F: 0821-2593328

Email : info@atme.in Web : www.atme.in


PRINCIPAL
ATME College of Engineering
13th KM Mysuru-Kanakapura-Bangalore
Methahalli Mysuru-570 028



ATME

College of Engineering



NBA

ACCREDITED

Affiliated to VTU, Belagavi; Approved by AICTE, New Delhi and Recognised by Government of Karnataka
Programs accredited by NBA, New Delhi - CV, EC, EE & ME (Validity: 2019-20 to 2021-22)

7.1.5.3 Landscaping with trees and Plants:

The ATMECE campus is has very good landscaping done to keep the environment positive and aesthetically pleasing. This will provide a positive environment for students and give a feel of the nature all the time. The photographs given below give a glimpse of the greenery in the campus.



ATME COLLEGE OF ENGINEERING

13th Kilometer, Mysore-Kanakapura-Bangalore Road, Mysore - 570 028 P: 0821-2593335 F: 0821-2593328

Email : info@atme.in Web : www.atme.in

Handwritten signature
PRINCIPAL

ATME College of Engineering
13th KM Mysuru-Kanakapura-Bangalore Road
Mellahalli Mysuru-570 028



A T M E

College of Engineering



NBA

ACCREDITED

Affiliated to VTU, Belagavi; Approved by AICTE, New Delhi and Recognised by Government of Karnataka
Programs accredited by NBA, New Delhi - CV, EC, EE & ME (Validity: 2019-20 to 2021-22)



PRINCIPAL

ATME College of Engineering
13th KM Mysuru-Kanakapura-Bangalore Road
Mellahalli, Mysuru-570 028

ATME COLLEGE OF ENGINEERING

13th Kilometer, Mysore-Kanakapura-Bangalore Road, Mysore - 570 028 P: 0821-2593335 F: 0821-2593328

Email : info@atme.in Web : www.atme.in



A T M E

College of Engineering



NBA

ACCREDITED

Affiliated to VTU, Belagavi; Approved by AICTE, New Delhi and Recognised by Government of Karnataka
Programs accredited by NBA, New Delhi - CV, EC, EE & ME (Validity: 2019-20 to 2021-22)



PRINCIPAL

ATME College of Engineering
13th KM Mysuru-Kanakapura-Bangalore Road
Mellahalli Mysuru-570 028

ATME COLLEGE OF ENGINEERING

13th Kilometer, Mysore-Kanakapura-Bangalore Road, Mysore - 570 028 P: 0821-2593335 F: 0821-2593328

Email : info@atme.in Web : www.atme.in



ATME

College of Engineering



NBA

ACCREDITED

Affiliated to VTU, Belagavi; Approved by AICTE, New Delhi and Recognised by Government of Karnataka
Programs accredited by NBA, New Delhi - CV, EC, EE & ME (Validity: 2019-20 to 2021-22)



ATME COLLEGE OF ENGINEERING

13th Kilometer, Mysore-Kanakapura-Bangalore Road, Mysore - 570 028 P: 0821-2593335 F: 0821-2593328

Email : info@atme.in Web : www.atme.in


PRINCIPAL

ATME College of Engineering
13th KM Mysuru-Kanakapura-Bangalore Road
Mellahalli Mysuru-570 028



ATME

College of Engineering



NBA ACCREDITED

Affiliated to VTU, Belagavi; Approved by AICTE, New Delhi and Recognised by Government of Karnataka
Programs accredited by NBA, New Delhi - CV, EC, EE & ME (Validity: 2019-20 to 2021-22)



[Signature]
PRINCIPAL

ATME College of Engineering
13th KM Mysuru-Kanakapura-Bangalore Road
Mellahalli Mysuru-570 028

ATME COLLEGE OF ENGINEERING

13th Kilometer, Mysore-Kanakapura-Bangalore Road, Mysore - 570 028 P: 0821-2593335 F: 0821-2593328

Email : info@atme.in Web : www.atme.in



ATME

College of Engineering



NBA
ACCREDITED

Affiliated to VTU, Belagavi; Approved by AICTE, New Delhi and Recognised by Government of Karnataka
Programs accredited by NBA, New Delhi - CV, EC, EE & ME (Validity: 2019-20 to 2021-22)

Campus Tour: 3D Virtual Tour

<https://www.google.com/maps/@12.3155768,76.7708122,3a,90y,178.98h,89.65t/data=!3m7!1e1!3m5!1sAF1QipMbNIRJSbCpE4gGO5j11O4MdzpwoC9alp83E754!2e10!3e12!7i6720!8i3360>

Web link to the Green Campus Initiatives: <https://atme.in/green-campus/>

PRINCIPAL

ATME College of Engineering
13th KM Mysuru-Kanakapura-Bangalore Road
Mettahalli Mysuru-570 028

ATME COLLEGE OF ENGINEERING

13th Kilometer, Mysore-Kanakapura-Bangalore Road, Mysore - 570 028 P: 0821-2593335 F: 0821-2593328

Email : info@atme.in Web : www.atme.in

ಇವರಿಗೆ

ಪ್ರಾಂಶುಪಾಲರು

ಎಐಎಂಇ ಮಹಾವಿದ್ಯಾಲಯ

ಮೈಸೂರು

ದಿನಾಂಕ.15/01/2021

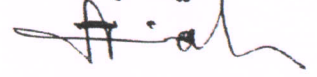
ಮಾನ್ಯರೇ,

ವಿಷಯ: ಎಐಎಂಇ ಮಹಾವಿದ್ಯಾಲಯದ ಕ್ಯಾಂಪಸ್‌ನಲ್ಲಿ ಅಸ್ವಚ್ಛತೆ ಕಂಡು ಬಂದಿರುವ ಬಗ್ಗೆ.

ಮೇಲ್ಕಂಡ ವಿಷಯಕ್ಕೆ ಸಂಬಂಧಿಸಿದಂತೆ, ಲೀನ್ ಕ್ಯಾಂಪಸ್ ಮತ್ತು ಪ್ಲಾಸ್ಟಿಕ್ ಪ್ರೀ ಕಮಿಷಿಯು ಕಾಲೇಜಿನ ಆವರಣದಲ್ಲಿ ಸ್ವಚ್ಛತೆಯ ಬಗ್ಗೆ ತಪಾಸಣೆ ಮಾಡುತ್ತಿದ್ದು, ಕೆಲವೊಂದು ಪ್ರದೇಶಗಳಲ್ಲಿ (ಮೆಕ್ಯಾನಿಕಲ್, ಸಿವಿಲ್ ಮತ್ತು ಇ ಅಂಡ್ ಇ ವಿಭಾಗಗಳ ಹಿಂಭಾಗ, ಕ್ಯಾಂಟೀನ್ ಹಿಂಭಾಗ ಮತ್ತು ಅಡ್ಮಿನ್ ಬ್ಲಾಕ್‌ನ ಹಿಂಭಾಗ) ಅಸ್ವಚ್ಛತೆ ಇರುವುದು ನಮ್ಮ ಗಮನಕ್ಕೆ ಕಂಡು ಬಂದಿರುತ್ತದೆ. ಆದ್ದರಿಂದ ಸಂಬಂಧಪಟ್ಟಂತಹ ನಿಬ್ಬಂಧಿ ವರ್ಗದವರಿಗೆ ಸ್ವಚ್ಛತೆಯನ್ನು ಕಾಪಾಡಲು ತಾವು ಸೂಚಿಸಬೇಕೆಂದು ಈ ಮೂಲಕ ಕೋರುತ್ತೇನೆ.

ಧನ್ಯವಾದಗಳೊಂದಿಗೆ,

ತಮ್ಮ ವಿಶ್ವಾಸಿ



15

M. S. S. S.

M. S. S. S.



PRINCIPAL

ATME College of Engineering
13th KM Mysuru-Kanakapura-Bangalore Road
Mellahalli Mysuru-570 028